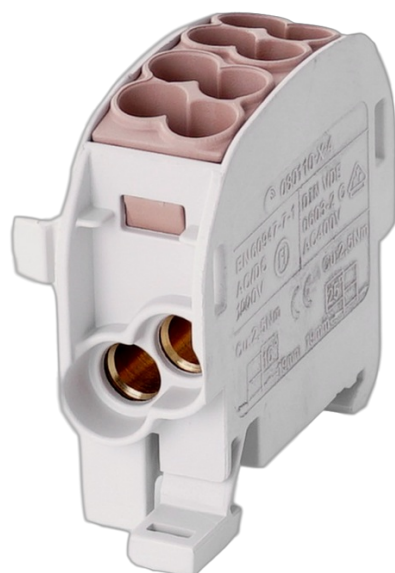


Branch terminal HLAK25 C 1p 2x25, 2x16mm² Cu L brown

Internal Reference: 080110-3-4



I(max) : 1000Vac/dc 152A Cu / 100A Al

IP20

halogen-free, self-extinguishing

width of one module

color of ground terminal according to IEC60947-7-1 standard

captive screws with constant tightening torque

can be coupled with HLAK25 and HLAK35 terminals

DIN rail mounting

Characteristics

I(n)	152 A	Color	brun
For drivers	Cu	Number of connections 16 mm ²	2
Number of connections 25 mm ²	2		

