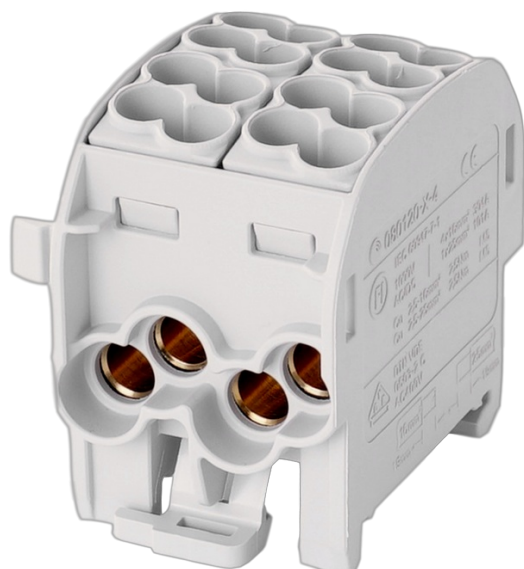


## Branch terminal HLAK25 C 1p 4x25, 4x16mm<sup>2</sup> Cu L grey

Internal Reference: 080120-0-4



I(max) : 1000Vac/dc 152A Cu / 100A Al

IP20

halogen-free, self-extinguishing

color of ground terminal according to IEC60947-7-1 standard

captive screws with constant tightening torque

can be coupled with HLAK25 and HLAK35 terminals

DIN rail mounting

### Characteristics

I(n)	152 A	Color	gris
For drivers	Cu	Number of connections	4
Number of connections	4	16 mm <sup>2</sup>	
25 mm <sup>2</sup>			

