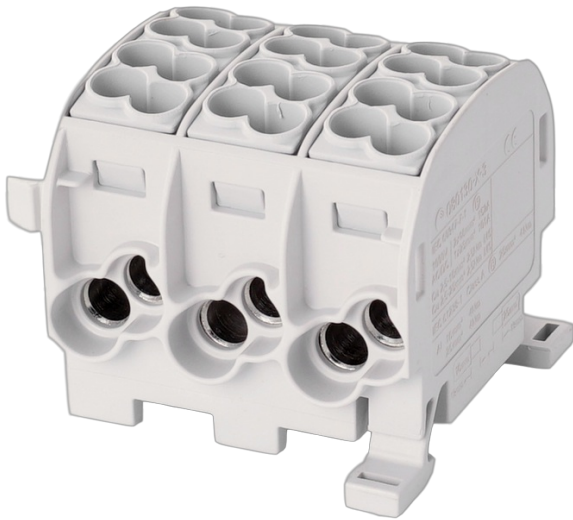




Branching terminal block HLAK25 C 3p 2x25, 2x16mm² Cu+Al 3L

Internal Reference: 080130-0-3



I(max) : 1000Vac/dc 152A Cu / 100A Al

IP20

halogen-free, self-extinguishing

color of ground terminal according to IEC60947-7-1 standard

captive screws with constant tightening torque

can be coupled with HLAK25 and HLAK35 terminals

DIN rail mounting

Characteristics

I(n)	152 A	Color	gris-gris-gris
For drivers	Cu + Al	Number of connections 16 mm ²	2 (3x)
Number of connections 25 mm ²	2 (3x)		

