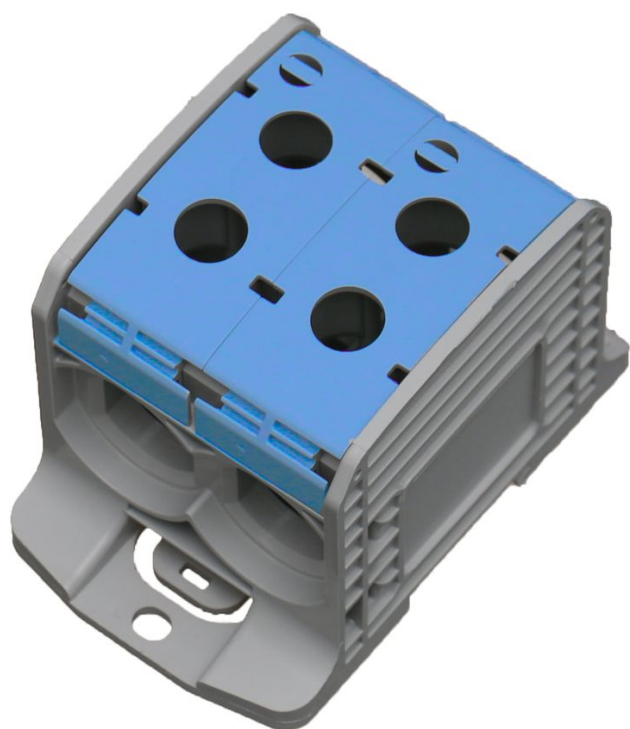


Bornier de racc. RKA 1p double 185mm² Cu+Al bleu

Internal Reference: 087820-1-3



I(max) :
 1000Vac/dc 365A Cu
 600V 310A Cu/250A Al

additional measuring terminal integrated by default

IP20

halogen-free, self-extinguishing

captive screws with constant tightening torque

can be coupled with RKA 185mm² terminals

DIN rail or screw mounting

ground terminal color according to IEC60947-7-1 standard

with profile for marking

for Cu and Al conductors

Characteristics

I(n)	365 A	Color	bleu
Number of connections 185 mm ²	4		

