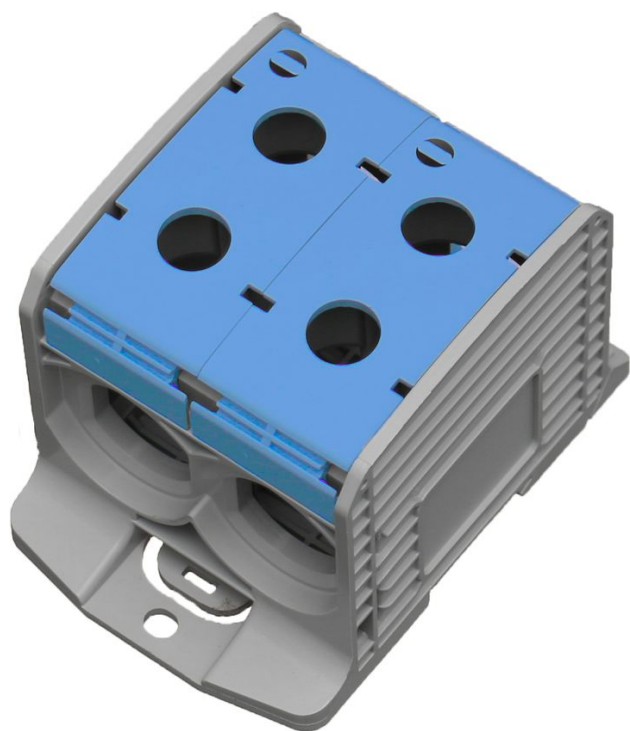


Bornier de racc. RKA 1p double 300mm² Cu+Al bleu

Internal Reference: 087920-1-3



I(max) :
 1000Vac/dc 520A Cu
 600V 420A Cu/340A Al

additional measuring terminal integrated by default

IP20

halogen-free, self-extinguishing

captive screws with constant tightening torque

can be coupled with RKA 300mm² terminals

DIN rail or screw mounting

ground terminal color according to IEC60947-7-1 standard

with profile for marking

for Cu and Al conductors

Characteristics

I(n)	520 A	Color	bleu
Number of connections 300 mm ²	4		

