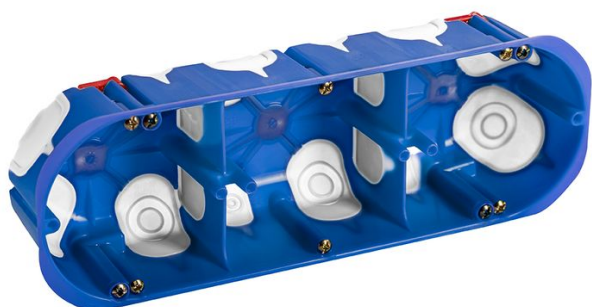


Flush-fit wiring boxes hollow walls dual D68x48

Internal Reference: D703K



The screws for hollow wall-mounting are supplied assembled in all references

All references with double-injection elastic entries

References 2K-3K with partition

Self-extinguishing PP+TPE

Blue base : RAL5002

Flush fit - Hollow walls. (Glow wire resistance 850

- C)

Characteristics

| | | | |
|-----------|--------|----------|-------|
| Depth | 48 mm | Diameter | 68 mm |
| Packaging | 50 pcs | | |

